

# LA Playout

## User Guide



2017

# Contents

<b>Introduction.....</b>	<b>3</b>
<b>Getting started.....</b>	<b>4</b>
Installation.....	4
Reinstalling & Updating.....	6
<b>Using LA Playout.....</b>	<b>9</b>
How to launch the app.....	9
Working with LA Playout.....	10
Settings tab.....	10
Main tab.....	12
<b>System requirements.....</b>	<b>15</b>
<b>Supported file formats.....</b>	<b>15</b>
<b>Contact Information.....</b>	<b>16</b>

# Introduction

*This user guide is for utilization of Loudness Analyzer's software product LA Playout. Loudness Analyzer is a line of the desktop applications which are intended to analyze sound levels of video- and audio files and also normalize it to the required levels.*

*This step-by-step manual will help you understand how to use LA Playout. Here you can find extensive information on the matter.*



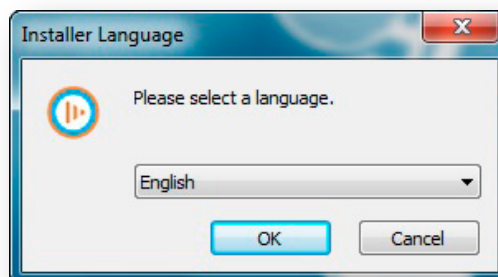
LA Playout allows broadcasters to get analytical information about integrated loudness of each program segment on the schedule in order to ensure compliance with sound level standards. To accomplish this task LA Playout integrates with Jünger Audio hardware. Jünger Audio hardware log loudness values and transfer them to J\*AM Loudness Logger software. LA Playout receives log-files from J\*AM and using the broadcast schedule carries out a comparative analysis of the integrated loudness of all program blocks, advertisements and announcements, etc.

## Installation

To set up the application, please follow the procedure below:

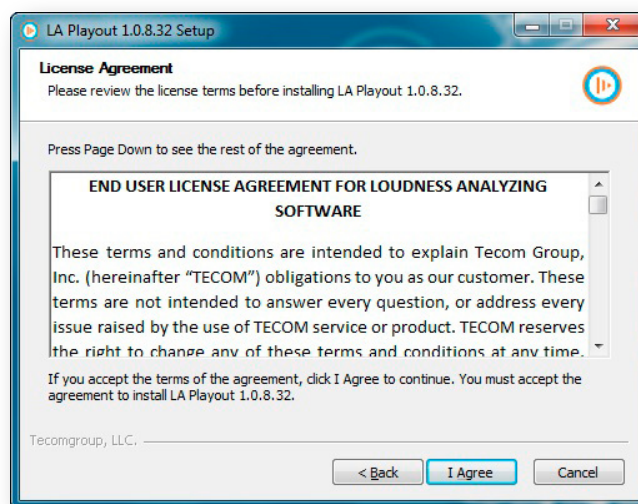
Double-click the shortcut icon “LA Playout-Setup-License-X. X. X. X X.EXE” to begin the installation.

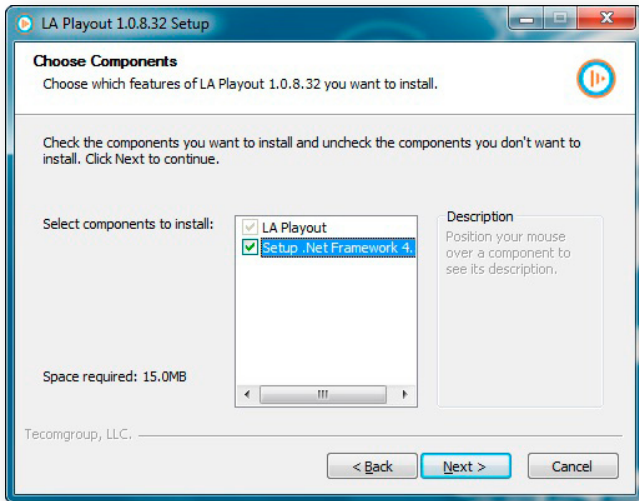
Select a language. The software interface is available in English and Russian.



On the Setup wizard page, click **NEXT**.

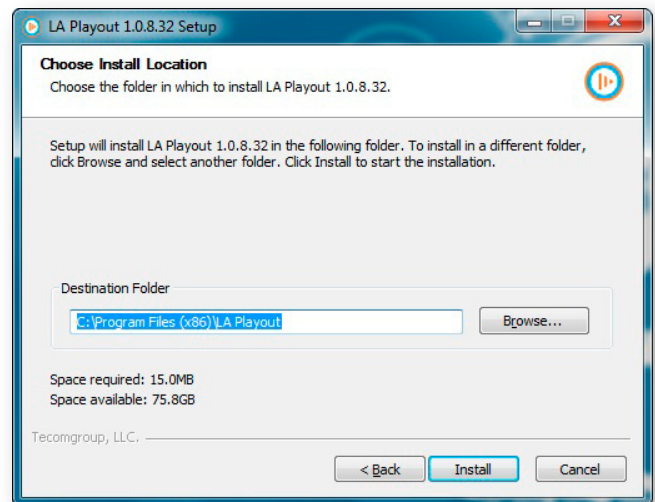
Read the software license agreement. To proceed with the installation you must **agree** to the terms presented in the license.





To continue the installation, you first must set up .Net Framework. Check the box next to **.NET Framework** then click **NEXT**. If the component has earlier been installed on your computer, click **NEXT**.

On the installation folder page, you can use the default path or you can change it. When the path is correct, click **Install**.



After the application has been installed, click **FINISH**. Uncheck the box next to **Run LA Playout** if you don't want to launch the application.



## Reinstalling & Updating

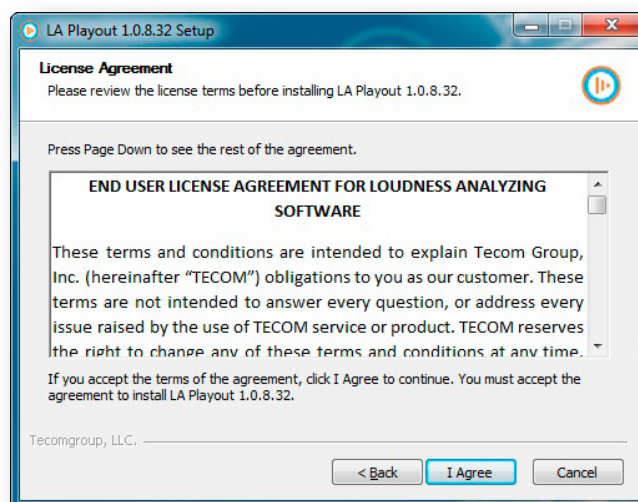
If LA Payout has earlier been installed on the computer or you need to update the software product, you must follow the procedure below:

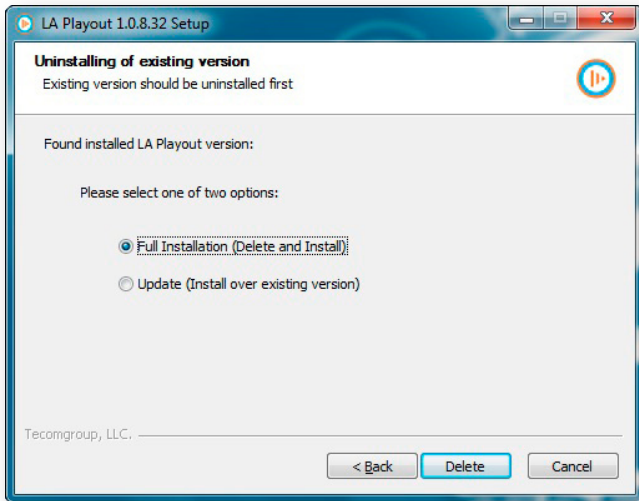


Double-click the icon “LA Payout-Setup-License-X. X. X. X X.EXE” to begin the reinstallation or the update.

On the Setup wizard page, click **NEXT**.

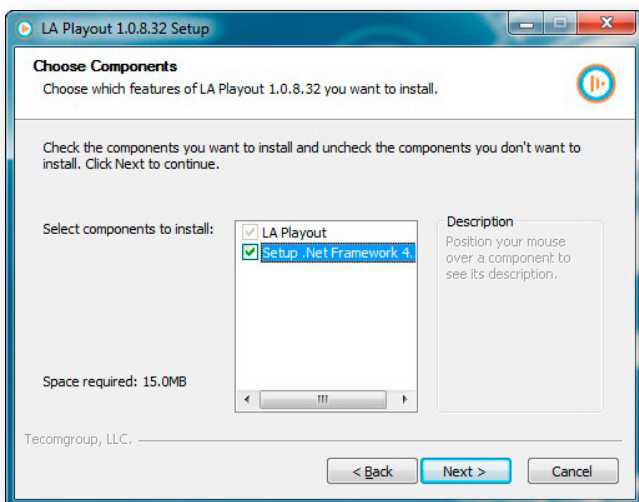
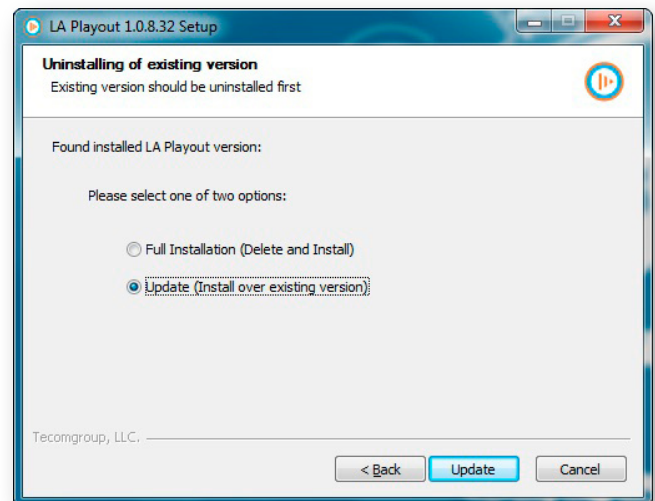
Review the software license agreement. To proceed with the installation you must **agree** to the terms presented in the license.



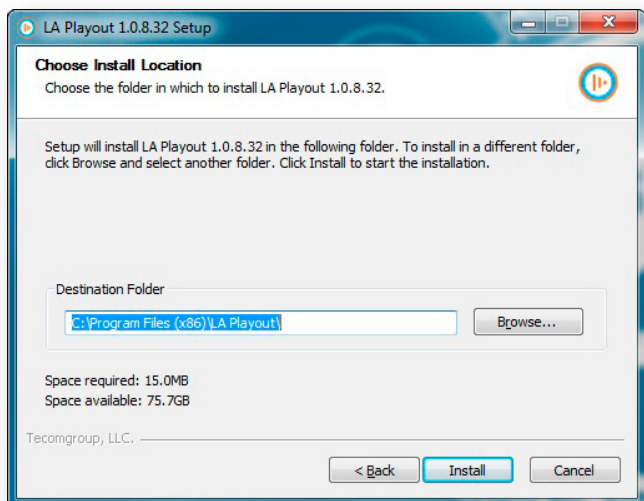


For the installation of software (delete the previous version and install the new one), select **Full Installation**, after that click **DELETE**.

For the upgrade to new software version, select **Update (Install over existing version)**, then click **UPDATE**. In this case the current software version will be updated, the previous one will remain on the computer.

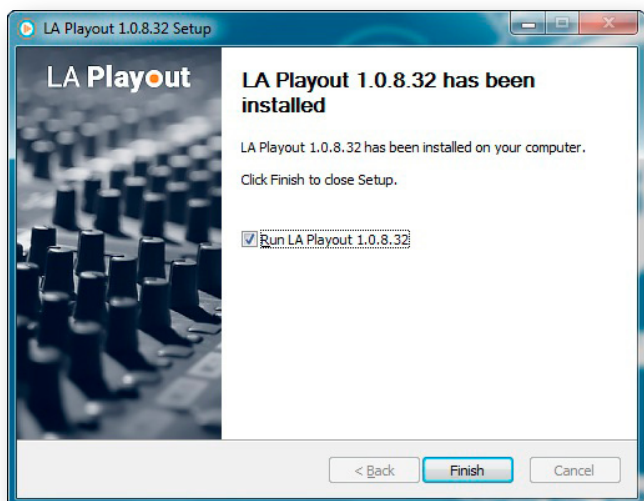
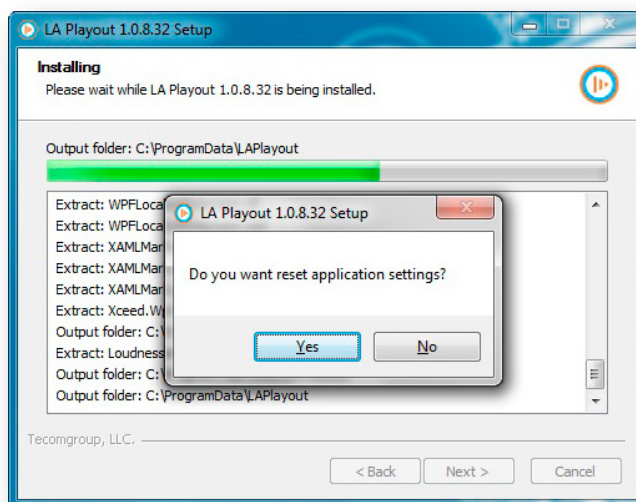


To continue the process, you first must set up .Net Framework. Check the box next to **.NET Framework** then click **NEXT**. If the component has been installed earlier, click **NEXT**.



On the installation folder page, you can use the default path or you can change it. When the path is correct, click **INSTALL**.

During the installation, another window will appear. You must confirm resetting settings or decline this option. If you want to reset the current settings, click **YES**.



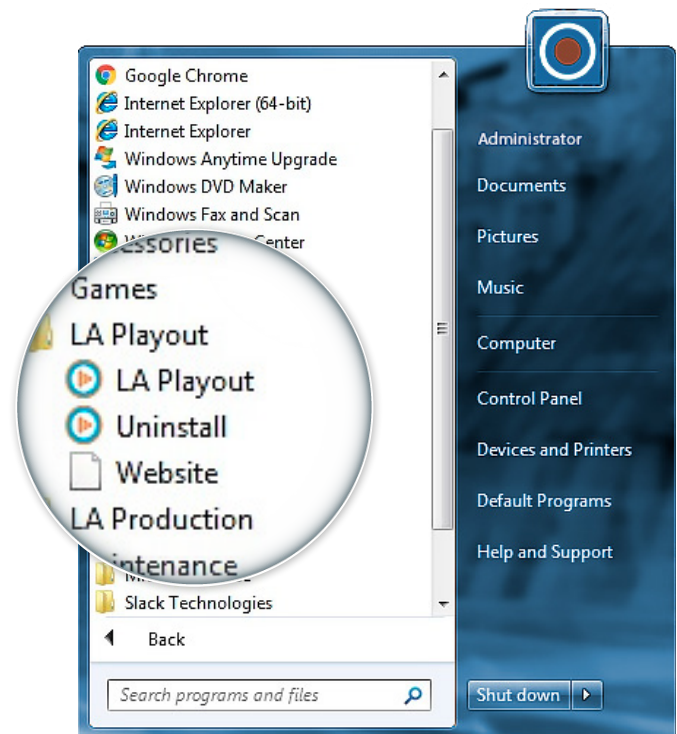
After the application has been installed, click **FINISH**. Uncheck the box next to **Run LA Playout** if you don't want to launch the application.



## How to launch the app

To run the application, choose **Start → All programs**. Click the application name on the All Programs list that appears. Then click the icon of the suitable application.

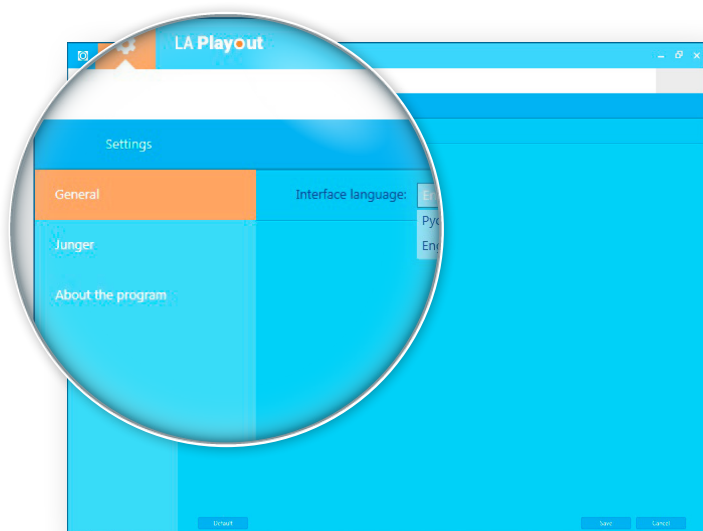
Also you can double-click the shortcut icon on your desktop to run LA Playout.



## Working with LA Playout

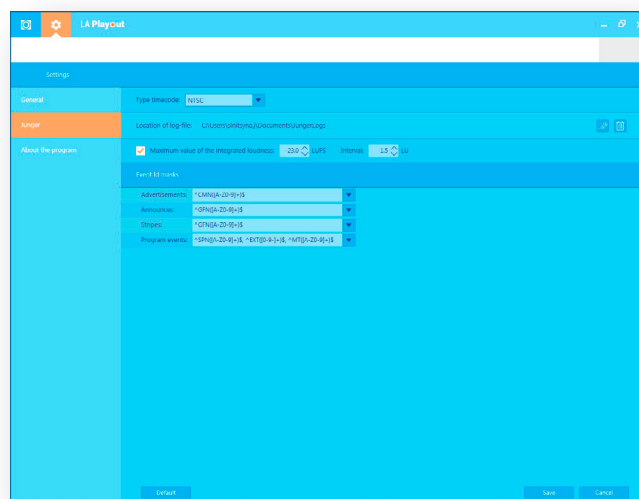
### Settings tab

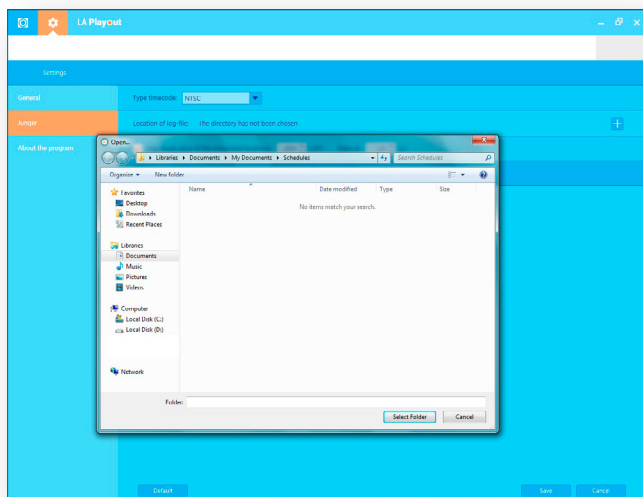
The Settings tab has a list of three subtabs: **General**, **Jünger** and **About the program**.



In **General subtab** you can change the interface language. To save changes click the Save button in the bottom right-hand corner. To return the default settings click **DEFAULT**.

On **Jünger subtab** you can see settings which are related to a J\*AM's log file. Jünger Audio's audio processors measure input and output values of short-term max, true peak max and integrated loudness. Then the application J\*AM Loudness Logger generates a certain log file. LA Playout calculates integrated loudness value of each program segment on the schedule using J\*AM's information.

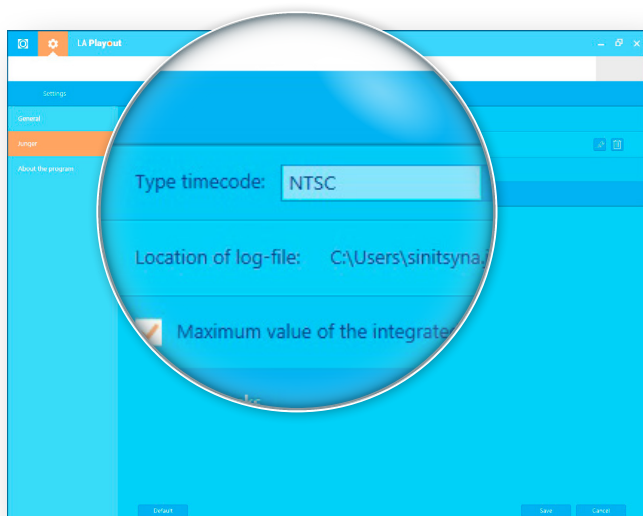
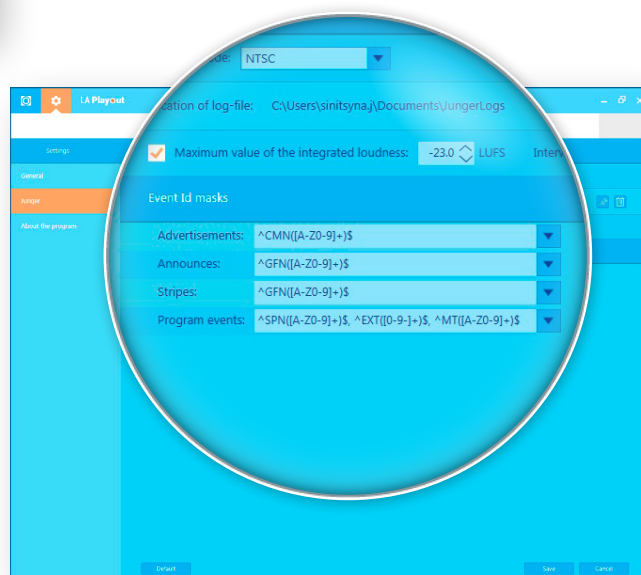




Before you start working with the schedule, specify a path to the folder where the log file is located. To save changes, click **SAVE**.

Also you're allowed to amend Maximum value of the integrated loudness. To save changes, click **SAVE**.

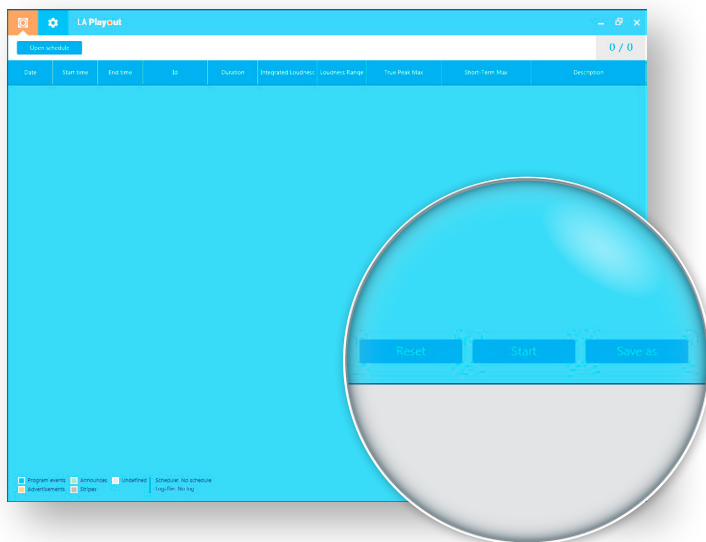
**Events ID Masks** are needed in order to identify an event's type on the schedule. There are four event's types: **Advertisements, Announces, Stripes and Program events**. ID masks are set using regular expressions ([https://en.wikipedia.org/wiki/Regular\\_expression](https://en.wikipedia.org/wiki/Regular_expression)). You can modify ID masks. To save your changes, click **SAVE**.



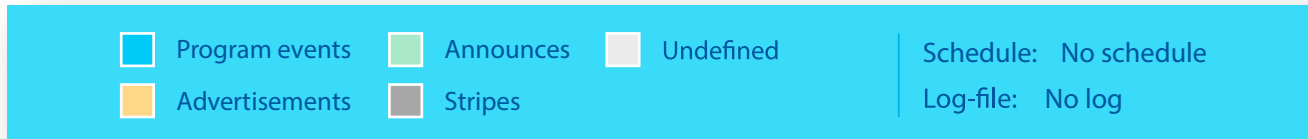
On Jünger subtab you can switch to another **Type timecode**.

## Main tab

The main tab provides information on the loudness levels of each segment on the schedule. At the top left corner you can switch to the **Settings tab**.



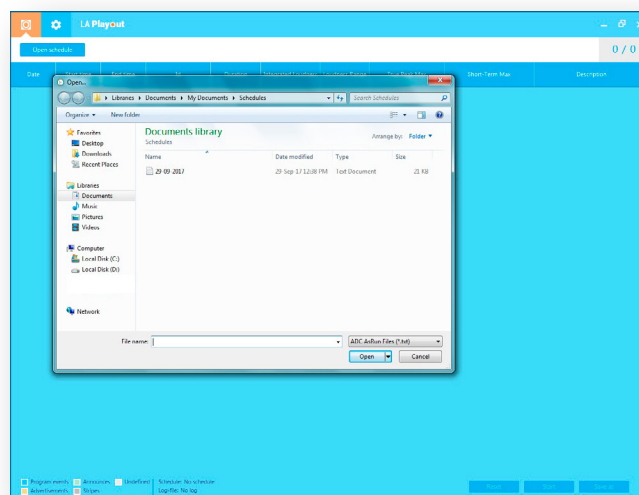
In the lower right of the tab you'll see the buttons **Reset**, **Start** and **Save as**. These buttons are inactive until the schedule is loaded.



At the bottom left corner there are notation keys. Program events, Advertisements, Announces, Stripes and Undefined segments of the schedule are marked in different colors.

To start work, click **OPEN SCHEDULE** in the upper left-hand corner.

You can load program schedules or AsRun logs from playout automation systems. The application currently supports Imagine Communications ADC™ AsRun files.



Date	Start time	End time	ID	Duration	Integrated Loudness	Loudness Range	True Peak Max	Short-term Max	Description
20-09-2017	12:22:11:00	12:22:13:00	CMNHESWT	00:00:02:00					CMNHESWT
20-09-2017	12:22:15:00	12:22:20:00	CMNCF	00:00:05:00					CMNCF
20-09-2017	12:22:25:00	12:22:30:00	CMNCF7	00:00:05:00					CMNCF7
20-09-2017	12:22:35:00	12:22:40:00	CMNCF2	00:00:05:00					CMNCF2
20-09-2017	12:22:45:00	12:22:50:00	CMNCF4	00:00:05:00					CMNCF4
20-09-2017	12:22:55:00	12:23:00:00	CMNCFM	00:00:05:00					CMNCFM
20-09-2017	12:23:05:00	12:23:10:00	SPNCF12	00:00:05:00					SPNCF12
20-09-2017	12:23:15:00	12:23:20:00	SPNCF	00:00:05:00					SPNCF
20-09-2017	12:23:25:00	12:23:30:00	SPNCF30	00:00:05:00					SPNCF30
20-09-2017	12:24:10:00	12:24:15:00	CMNFB	00:00:05:00					CMNFB
20-09-2017	12:24:20:00	12:24:25:00	CMNFB	00:00:05:00					CMNFB
20-09-2017	12:24:30:00	12:24:35:00	CMNFB5	00:00:05:00					CMNFB5
20-09-2017	12:24:40:00	12:24:45:00	CMNFB1	00:00:05:00					CMNFB1
20-09-2017	12:24:50:00	12:24:55:00	CMNFB4	00:00:05:00					CMNFB4
20-09-2017	12:25:00:00	12:25:05:00	CMNFB5	00:00:05:00					CMNFB5
20-09-2017	12:25:10:00	12:25:15:00	CMNFB20M	00:00:05:00					CMNFB20M
20-09-2017	12:25:20:00	12:25:25:00	CMNFBV8	00:00:05:00					CMNFBV8
20-09-2017	12:25:30:00	12:25:35:00	CMNFBV8	00:00:05:00					CMNFBV8
20-09-2017	12:25:40:00	12:25:45:00	CMNFBV8	00:00:05:00					CMNFBV8
20-09-2017	12:25:50:00	12:25:55:00	CMNFB	00:00:05:00					CMNFB
20-09-2017	12:26:00:00	12:26:05:00	SPNFB	00:00:05:00					SPNFB
20-09-2017	12:26:10:00	12:26:15:00	SPNFB	00:00:05:00					SPNFB
20-09-2017	12:26:20:00	12:26:25:00	SPNFB35	00:00:05:00					SPNFB35
20-09-2017	12:26:30:00	12:26:35:00	CMNFB17	00:00:05:00					CMNFB17
20-09-2017	12:26:40:00	12:26:45:00	CMNFBV8	00:00:05:00					CMNFBV8
20-09-2017	12:26:50:00	12:26:55:00	CMNFB	00:00:05:00					CMNFB
20-09-2017	12:27:00:00	12:27:05:00	CMNFB17	00:00:05:00					CMNFB17
20-09-2017	12:27:10:00	12:27:15:00	CMNFBV8	00:00:05:00					CMNFBV8
20-09-2017	12:27:20:00	12:27:25:00	CMNFBV8	00:00:05:00					CMNFBV8
20-09-2017	12:27:30:00	12:27:35:00	CMNFBV8	00:00:05:00					CMNFBV8
20-09-2017	12:27:40:00	12:27:45:00	SPNFB	00:00:05:00					SPNFB
20-09-2017	12:27:50:00	12:27:55:00	SPNFB	00:00:05:00					SPNFB

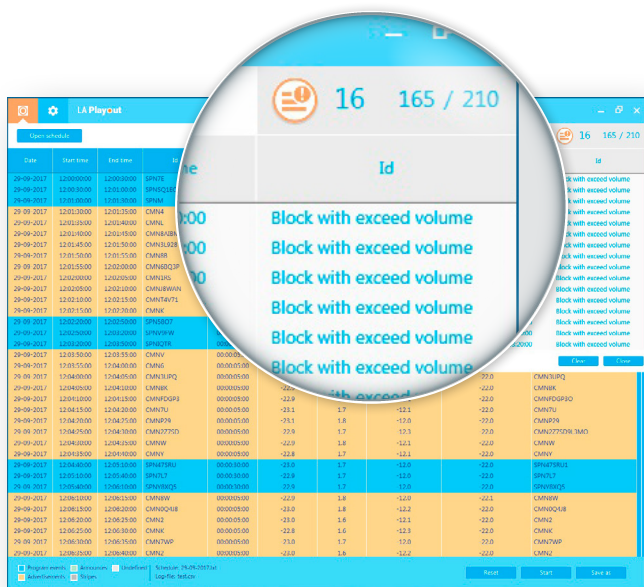
After the file is opened, you can review the list of events. You will see **Date**, **Start time**, **End time**, **ID**, **Duration** and **Description**.

To begin to monitor the loudness levels of each element, click **START**. The application will be processing in near real time. LA Playout receives and processes the data from playout automation systems and audio processors automatically.

After a while there's more information in the following columns: **Integrated loudness**, **Loudness range**, **True peak max**, **Short-term max**.

If the monitoring process reveals events with exceeded loudness threshold levels, the results will be **marked in red**.

Date	Start time	End time	ID	Duration	Integrated Loudness	Loudness Range	True Peak Max	Short-term Max	Description
20-09-2017	12:22:11:00	12:22:13:00	SPNFB	00:00:02:00	-19.0	1.6	-12.0	-22.0	SPNFB
20-09-2017	12:22:15:00	12:22:20:00	SPNFB35	00:00:05:00	-19.0	1.7	-12.0	-22.0	SPNFB35
20-09-2017	12:22:25:00	12:22:30:00	SPNFB	00:00:05:00	-19.0	1.7	-12.0	-22.0	SPNFB
20-09-2017	12:22:35:00	12:22:40:00	CMNFB	00:00:05:00	-19.0	1.6	-12.0	-22.0	CMNFB
20-09-2017	12:22:45:00	12:22:50:00	CMNFB	00:00:05:00	-19.0	1.7	-12.0	-22.0	CMNFB
20-09-2017	12:22:55:00	12:23:00:00	CMNFB	00:00:05:00	-19.0	1.6	-12.0	-22.0	CMNFB
20-09-2017	12:23:05:00	12:23:10:00	CMNFB	00:00:05:00	-19.0	1.7	-12.0	-22.0	CMNFB
20-09-2017	12:23:15:00	12:23:20:00	CMNFB	00:00:05:00	-19.0	1.7	-12.0	-22.0	CMNFB
20-09-2017	12:23:25:00	12:23:30:00	CMNFB	00:00:05:00	-19.0	1.7	-12.0	-22.0	CMNFB
20-09-2017	12:23:35:00	12:23:40:00	CMNFB	00:00:05:00	-19.0	1.7	-12.0	-22.0	CMNFB
20-09-2017	12:23:45:00	12:23:50:00	CMNFB	00:00:05:00	-19.0	1.7	-12.0	-22.0	CMNFB
20-09-2017	12:23:55:00	12:24:00:00	CMNFB	00:00:05:00	-19.0	1.7	-12.0	-22.0	CMNFB
20-09-2017	12:24:05:00	12:24:10:00	CMNFB	00:00:05:00	-19.0	1.7	-12.0	-22.0	CMNFB
20-09-2017	12:24:15:00	12:24:20:00	CMNFB	00:00:05:00	-19.0	1.7	-12.0	-22.0	CMNFB
20-09-2017	12:24:25:00	12:24:30:00	CMNFB	00:00:05:00	-19.0	1.7	-12.0	-22.0	CMNFB
20-09-2017	12:24:35:00	12:24:40:00	CMNFB	00:00:05:00	-19.0	1.7	-12.0	-22.0	CMNFB
20-09-2017	12:24:45:00	12:24:50:00	CMNFB	00:00:05:00	-19.0	1.7	-12.0	-22.0	CMNFB
20-09-2017	12:24:55:00	12:25:00:00	CMNFB	00:00:05:00	-19.0	1.7	-12.0	-22.0	CMNFB
20-09-2017	12:25:05:00	12:25:10:00	CMNFB	00:00:05:00	-19.0	1.7	-12.0	-22.0	CMNFB
20-09-2017	12:25:15:00	12:25:20:00	CMNFB	00:00:05:00	-19.0	1.7	-12.0	-22.0	CMNFB
20-09-2017	12:25:25:00	12:25:30:00	CMNFB	00:00:05:00	-19.0	1.7	-12.0	-22.0	CMNFB
20-09-2017	12:25:35:00	12:25:40:00	CMNFB	00:00:05:00	-19.0	1.7	-12.0	-22.0	CMNFB
20-09-2017	12:25:45:00	12:25:50:00	CMNFB	00:00:05:00	-19.0	1.7	-12.0	-22.0	CMNFB
20-09-2017	12:25:55:00	12:26:00:00	CMNFB	00:00:05:00	-19.0	1.7	-12.0	-22.0	CMNFB
20-09-2017	12:26:05:00	12:26:10:00	CMNFB	00:00:05:00	-19.0	1.7	-12.0	-22.0	CMNFB
20-09-2017	12:26:15:00	12:26:20:00	CMNFB	00:00:05:00	-19.0	1.7	-12.0	-22.0	CMNFB
20-09-2017	12:26:25:00	12:26:30:00	CMNFB	00:00:05:00	-19.0	1.7	-12.0	-22.0	CMNFB
20-09-2017	12:26:35:00	12:26:40:00	CMNFB	00:00:05:00	-19.0	1.7	-12.0	-22.0	CMNFB
20-09-2017	12:26:45:00	12:26:50:00	CMNFB	00:00:05:00	-19.0	1.7	-12.0	-22.0	CMNFB
20-09-2017	12:26:55:00	12:27:00:00	CMNFB	00:00:05:00	-19.0	1.7	-12.0	-22.0	CMNFB
20-09-2017	12:27:05:00	12:27:10:00	CMNFB	00:00:05:00	-19.0	1.7	-12.0	-22.0	CMNFB
20-09-2017	12:27:15:00	12:27:20:00	CMNFB	00:00:05:00	-19.0	1.7	-12.0	-22.0	CMNFB
20-09-2017	12:27:25:00	12:27:30:00	CMNFB	00:00:05:00	-19.0	1.7	-12.0	-22.0	CMNFB
20-09-2017	12:27:35:00	12:27:40:00	CMNFB	00:00:05:00	-19.0	1.7	-12.0	-22.0	CMNFB
20-09-2017	12:27:45:00	12:27:50:00	CMNFB	00:00:05:00	-19.0	1.7	-12.0	-22.0	CMNFB
20-09-2017	12:27:55:00	12:28:00:00	CMNFB	00:00:05:00	-19.0	1.7	-12.0	-22.0	CMNFB



Also in the upper right-hand corner there is a counter. You'll see the information about how many segments of the schedule the application has analyzed.

To get more information on exceeded loudness levels, click the icon next to the counter. You'll see the list of files with detected loudness problems.

After all you can save the information as a report in a format .xlsx and .xls. Click **SAVE AS**.

Also you can reset the schedule and clear the playlist. Click **RESET**.



# System Requirements

Processor: 2 GHz minimum

RAM: 4 GB minimum

Hard drive: 10 GB of free space

Graphics hardware: 256MB of memory minimum

Screen Resolution: 1024x768 minimum and 24-bit color depth

# Supported File Formats

Imagine Communications ADC™ AsRun files: .TXT

